

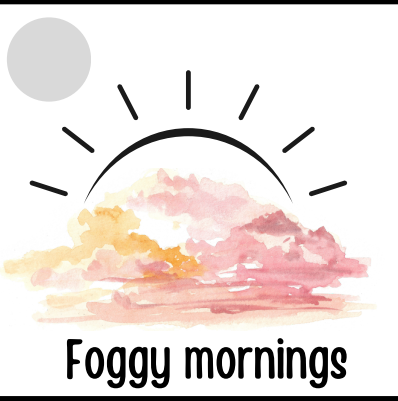


NATURE WATCH

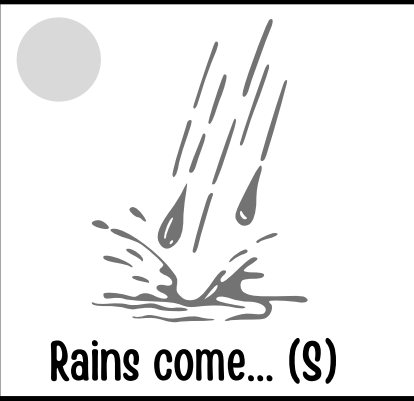
APRIL



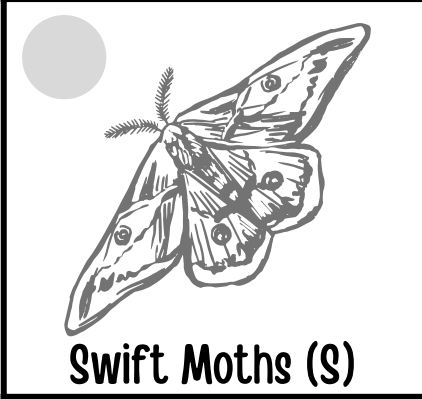
Migration begins...



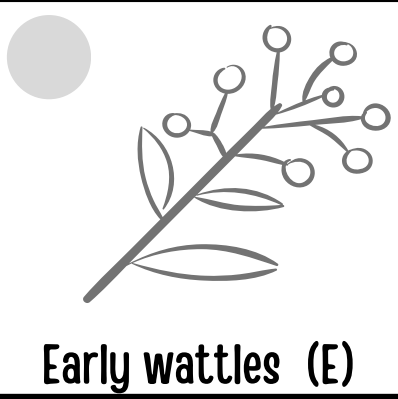
Foggy mornings



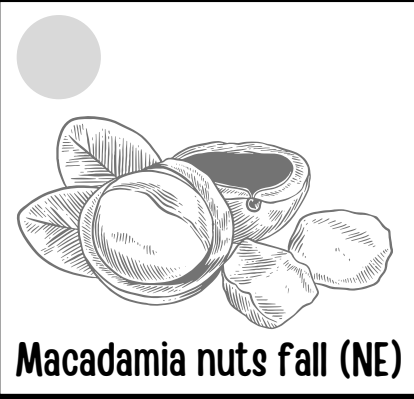
Rains come... (S)



Swift Moths (S)



Early wattles (E)



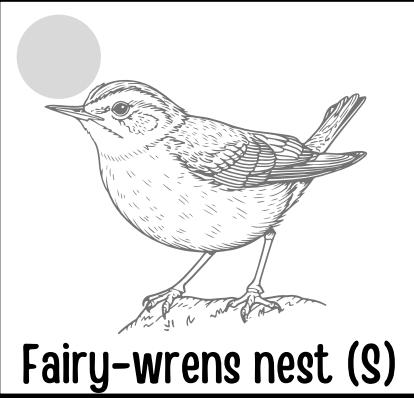
Macadamia nuts fall (NE)



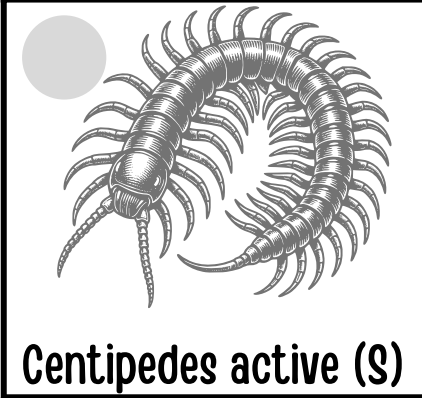
Wind arrives (N)



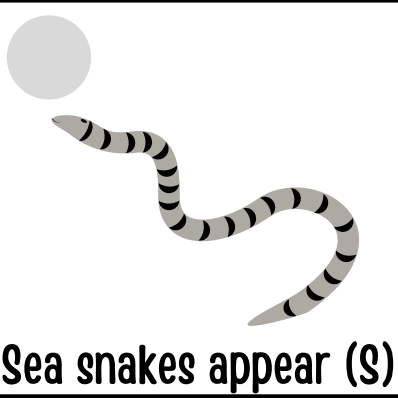
Leaves fall (S/E/W)



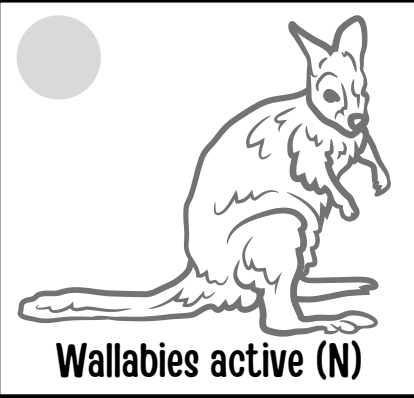
Fairy-wrens nest (S)



Centipedes active (S)



Sea snakes appear (S)



Wallabies active (N)