



Math in Nature

# Lady Beetle Math

## Investigation Pages

- Page 2—Reflectional Symmetry      Print. You can laminate this page to use multiple times. Use coloured whiteboard markers to complete the Lady Beetle. You might also like to use a small hand held mirror to show reflected symmetry.
- Page 3-4—Matching Cards            Use double sided printing to print these cards. Laminate and cut around each square. The cards can be use with little children to match or play a small game of memory.
- Pages 5-10—Counting Mats         These pages can be printed and laminated and used as counting mats to learn to count in twos. Add black buttons to each Lady Beetle. Use an erasable pen to write in the numbers, trace the number word.

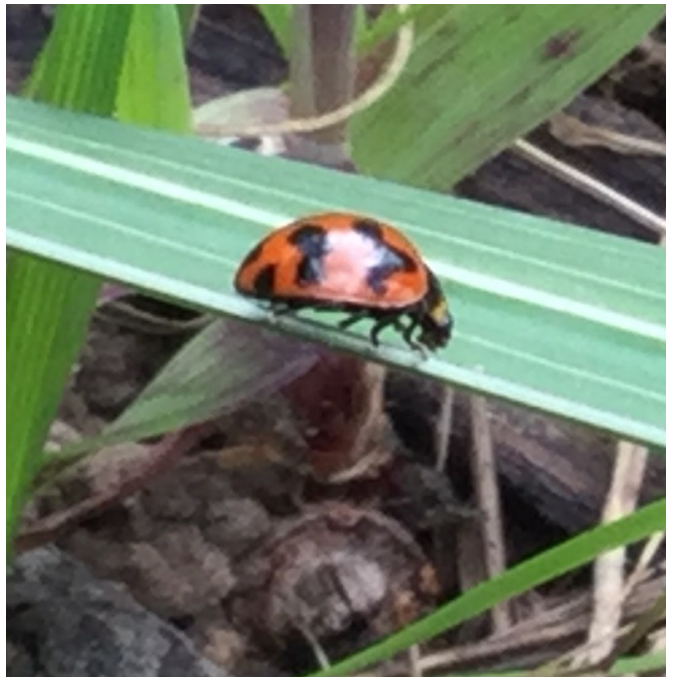
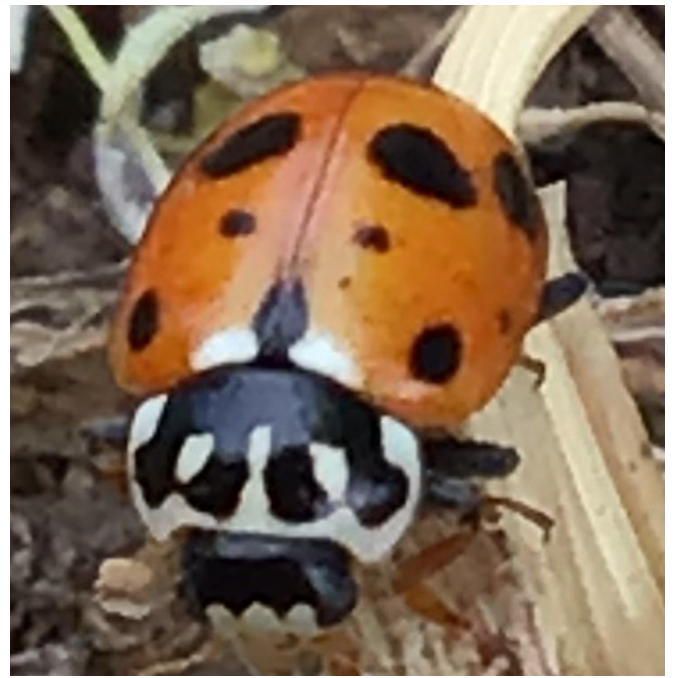
### PHOTOCOPYING AND DISTRIBUTION POLICY

*©Copyright 2021 by Johanna Buijs. All rights reserved. Permission granted to freely print or copy for your own use. Please link back to this web page if you would like to share with others.*

# *Reflectional Symmetry*

Can you finish this Lady Beetle?

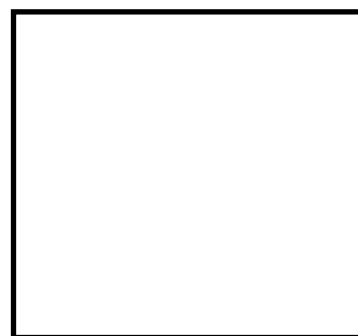
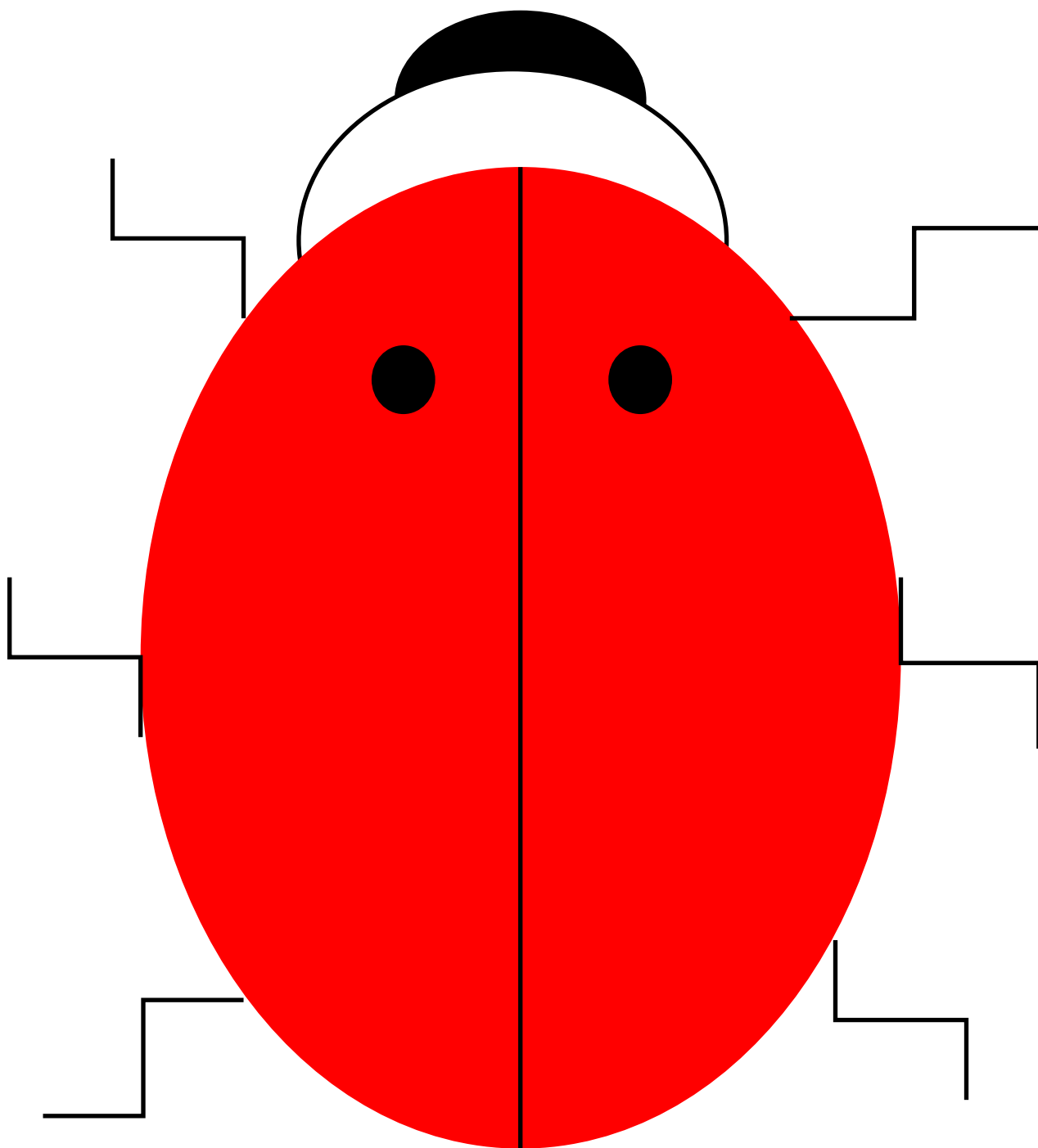






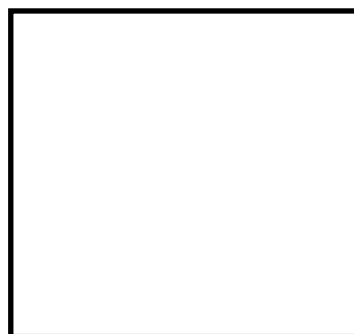
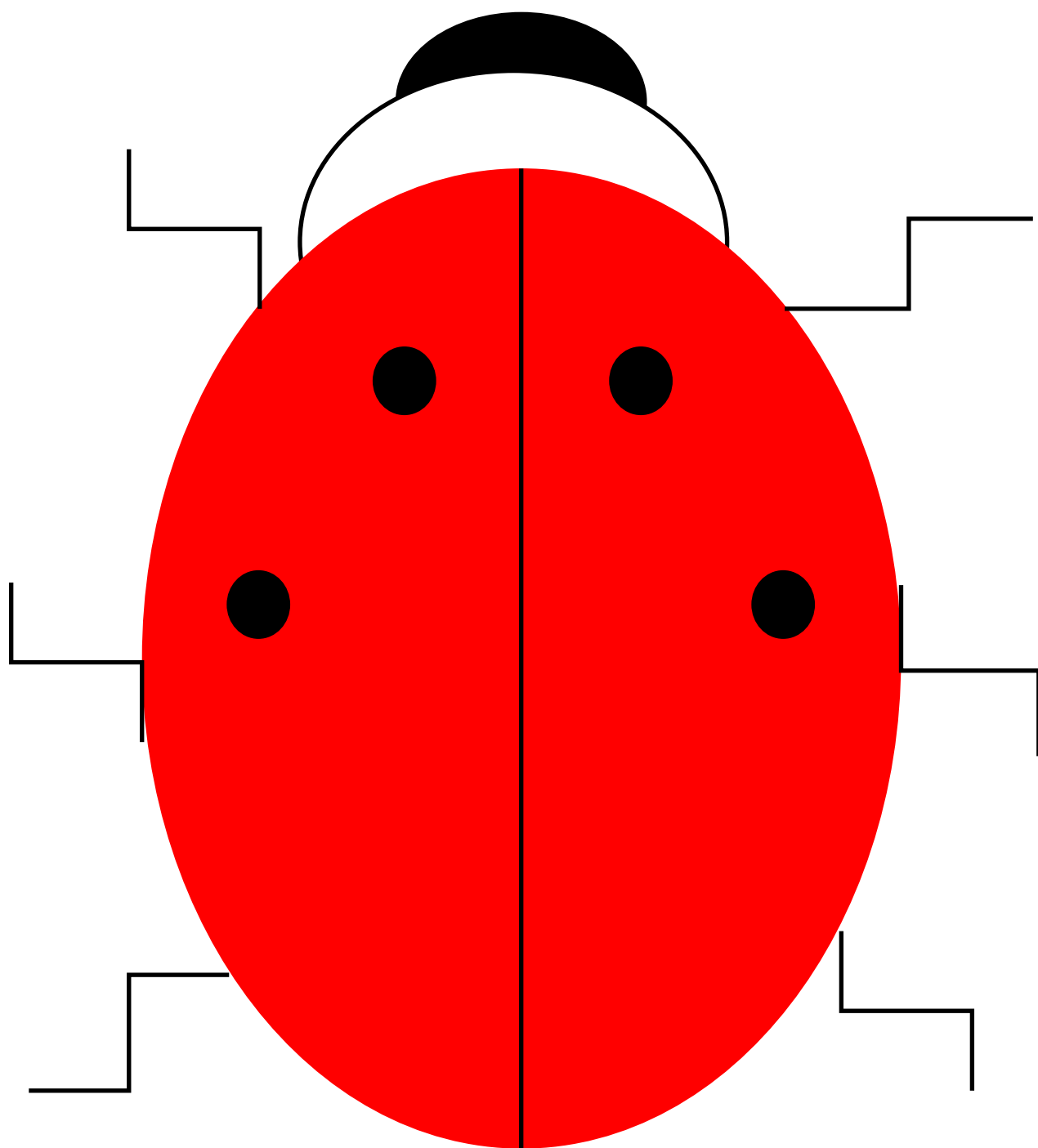


Count my spots.



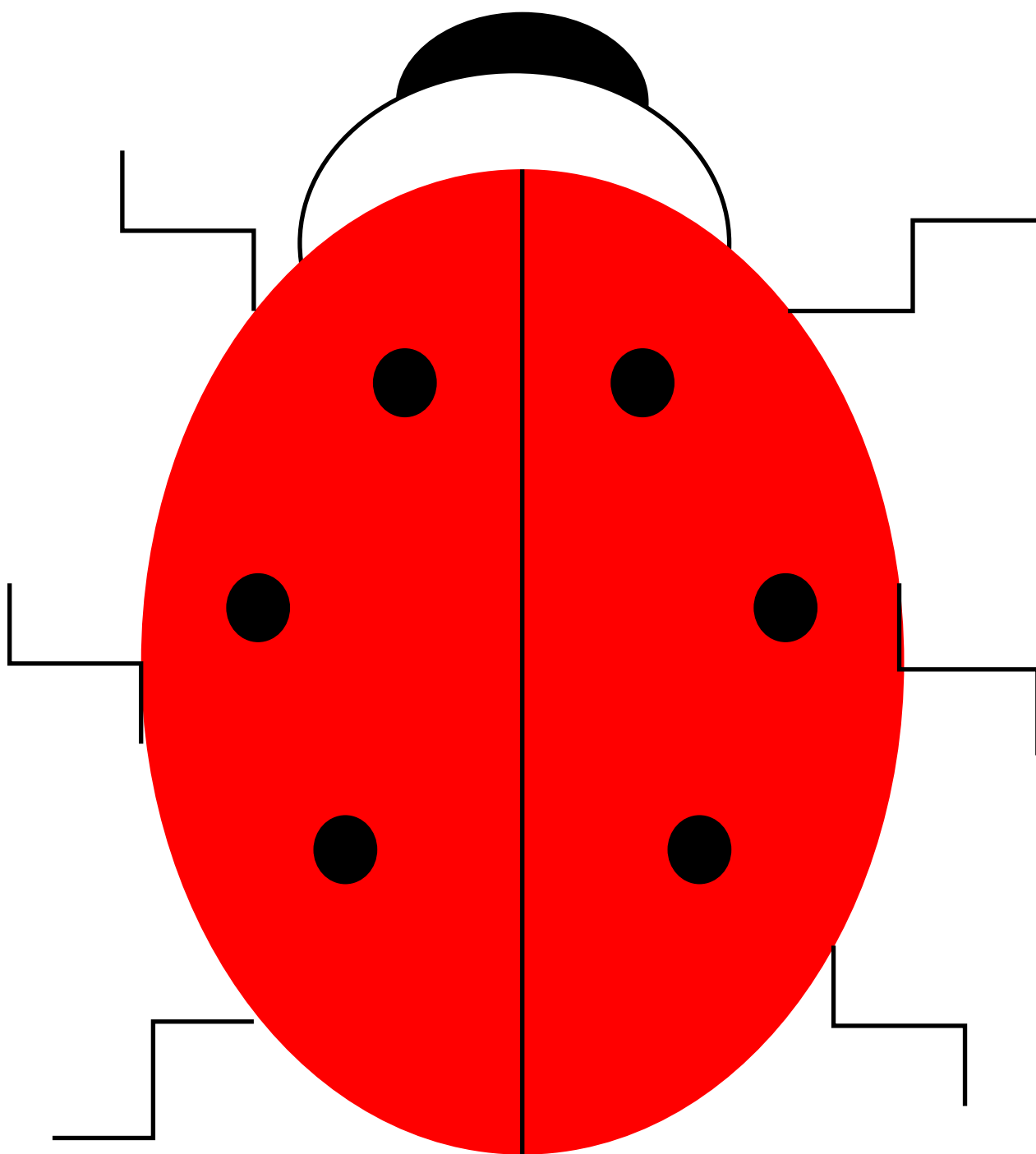
two

Count my spots.

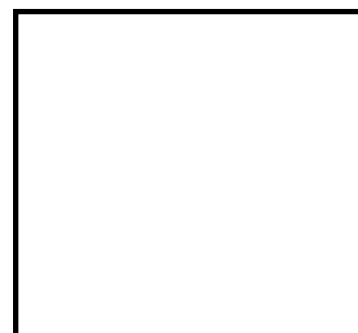


four

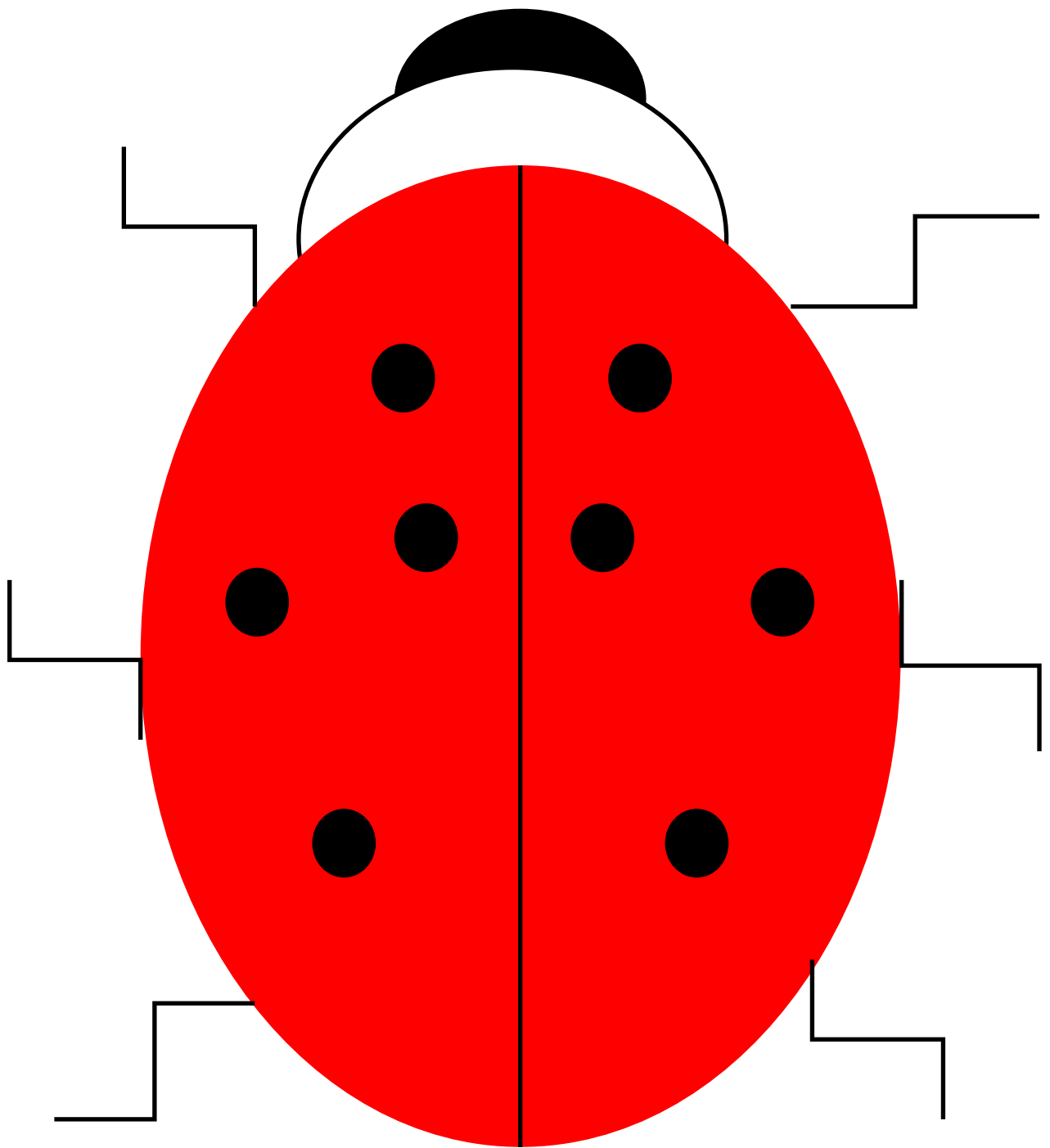
Count my spots.



s i x



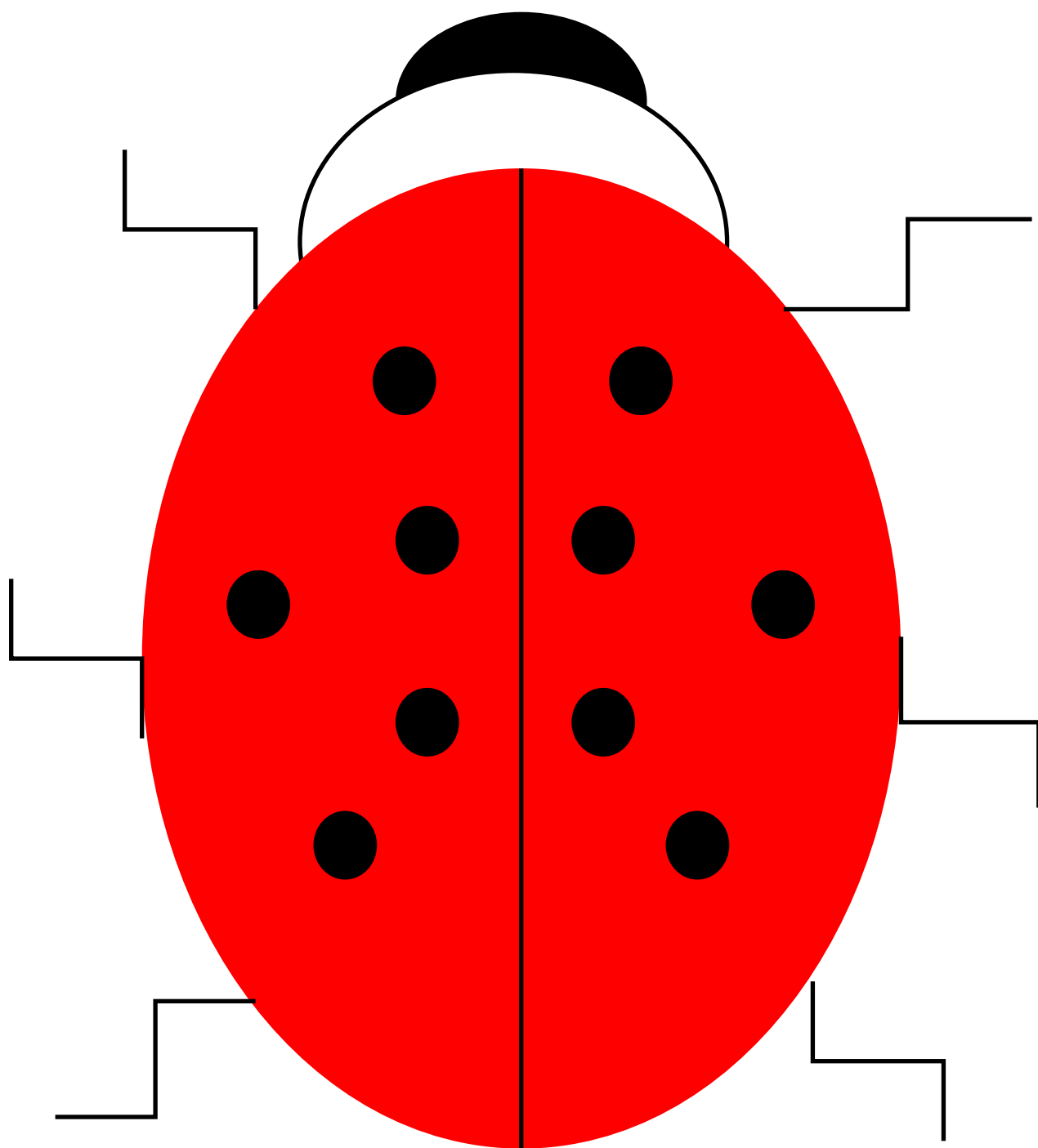
Count my spots.



eight

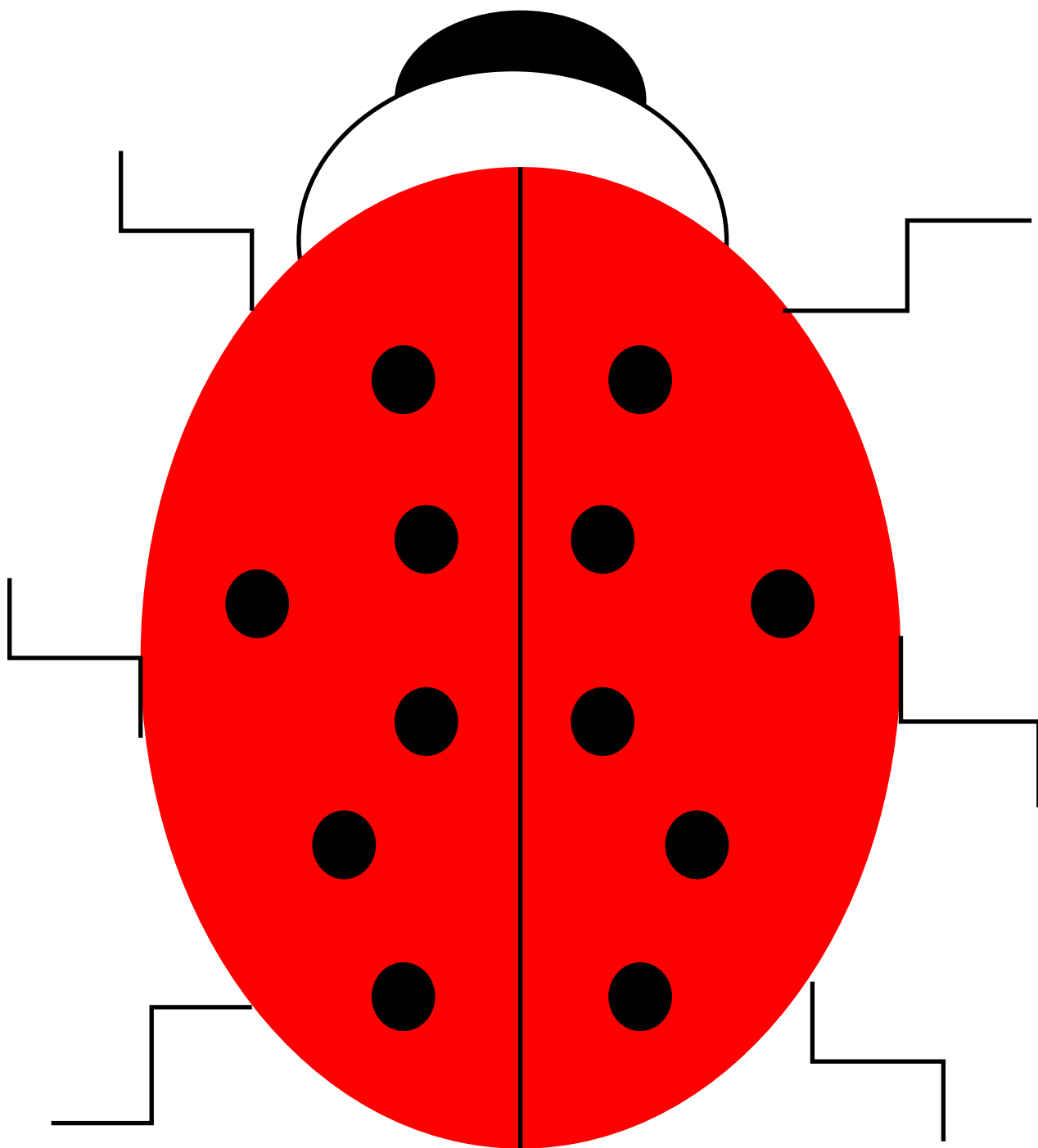


Count my spots.



ten

Count my spots.



twelve